

# Second Workshop of the PAGES Varves Working Group

*The Varves Working Group (VWG) is a working group under the frame of the PAGES Cross Cutting Theme 1 "Chronology". The purpose of the VWG is to gather the varve community together and to bridge the gaps between people working with sedimentary varves and other communities dealing with annually resolved records.*

## "Learning from Other Communities"

This workshop will be focused on the development of robust varve chronologies based on what can be learned from other paleo communities that use non-sedimentary, annually resolved climate archives. Keynote addresses will be delivered by experts from the tree ring, ice core, coral, and speleothem communities to learn about their tools and methodologies, and how "best-practice" techniques in these adjacent fields can be applied and adapted to varved sediments.

## Location and Date of Workshop:

Texas A&M University—Corpus Christi (TX, USA) from 17-19 March 2011

## Important Notes and Dates:

Participation in this workshop will be limited to 50 people in order to enable an effective, interactive environment. Applications to attend and receive support may not be able to be considered if received after 1 February 2011.

**1 February 2011**—applications with brief abstracts due

**8 February 2011**—invitations to participate issued

**15 February 2011**—workshop registration including full abstract submission completed

Further details are found in this circular. The most up-to-date information is available directly from the workshop organizer contacts, or from the VWG website at:

<http://www.pages-igbp.org/science/varves/>

## Workshop Organizing Committee:

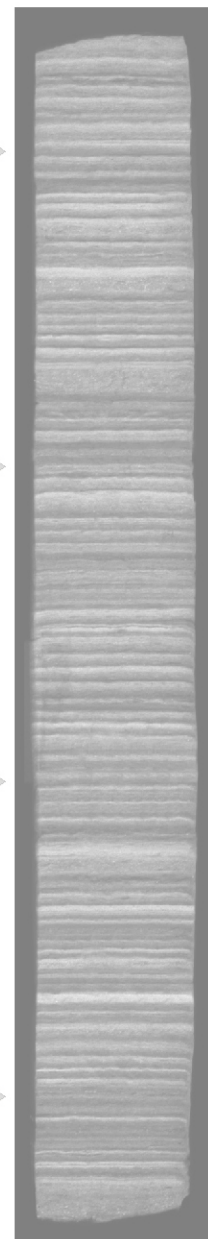
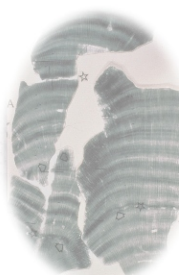
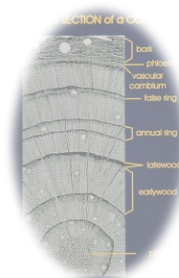
**Local Organizer:** Mark Besonen (Texas A&M University—Corpus Christi)

**VWG Coordinating Committee:** Pierre Francus, Chair (Institut National de la Recherche Scientifique, Québec), Richard Behl (California State University, Long Beach), Martin Grosjean (University of Bern), Antti E.K. Ojala (Geological Survey of Finland), and Bernd Zolitschka (University of Bremen)

## All Contacts and Inquiries:

Mark Besonen, Texas A&M University—Corpus Christi  
tel: +1.361.825.2043; e-mail: mark.besonen@tamucc.edu  
— or —

Pierre Francus, Institut National de la Recherche Scientifique  
tel: +1.418.654.3780; e-mail: pfrancus@ete.inrs.ca



**varves**

This workshop is supported by:

**PAGES**  
PAST GLOBAL CHANGES

### **Applications with Brief Abstracts:**

Participation in this workshop will be by invitation based on the workshop organizing committee's review of short, two page applications. The application form is available on the VWG website, or directly from the specified contacts. A brief abstract (~300 words text-only) of your potential oral or poster contribution at the workshop is included as part of the application form. Completed applications forms should be e-mailed to Mark Besonen (mark.besonen@tamucc.edu) by **1 February 2011**.

**Applications from early career scientists (new faculty/researchers, post-docs, and graduate students) and under-represented groups (minorities, women, and persons with disabilities) are strongly encouraged.** We expect that travel support to help encourage participation by these groups will be available.

### **Invitations to Participate and Workshop Registration Including Full Abstract Submission:**

Invitations to participate in the workshop will be e-mailed by **8 February 2011**.

To register for the workshop and submit your full abstract, please simply respond to your e-mail invitation by **15 February 2011**, and accept or decline your invitation. Attach your full abstract to that e-mail response. We are expecting full abstracts to range from 1-4 pages in length, and they may include tables and color figures. Specific formatting details for full abstracts will be provided in the invitation e-mail.

### **Estimated Workshop Costs:**

Funding requests have been made to PAGES (granted), the U.S. National Science Foundation (pending), and INQUA (pending) to support this workshop. If all funding is obtained, we estimate a workshop registration fee of US\$265 will be necessary. This workshop registration fee will cover all costs associated with the workshop including food and three nights of double-occupancy lodging for each participant. Depending on the success of the pending funding requests, lodging support may have to be reduced.

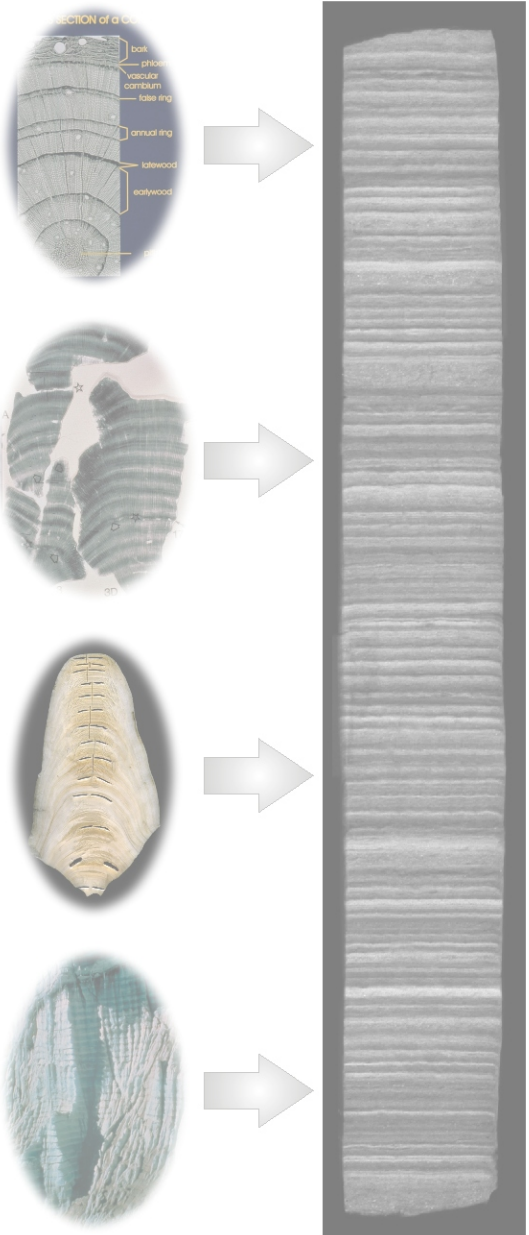
### **Travel and Travel Support:**

Participants will be responsible for travel to/from Corpus Christi International Airport. Shuttle service will be provided to/from the airport.

Travel support has been specifically requested from the U.S. National Science Foundation for ~15 early career scientists (new faculty/researchers, post-docs, and graduate students) and under-represented groups (minorities, woman, and persons with disabilities). This will only be available to U.S.-based participants per NSF regulations. Depending on the success of this funding request, we hope to be able to completely cover (or largely defray) the cost of travel to the workshop location for qualified participants.

### **About the First Workshop:**

A program and abstract volume from the First Workshop, held in Tallinn, Estonia in April 2010, is available on the Publications page of the VWG website. The First Workshop focused on methodological advances and calibration improvements that had been developed in varve research over the last decade.



### **Preliminary Workshop Program:**

A preliminary workshop program follows. As the program and schedule are firmed up, occasional updates will be posted on the VWG website.

16 March 2011

participants arrive to Corpus Christi

17 March 2011

7:30 Breakfast

8:30 KEYNOTE ADDRESS—Malcolm Hughes (confirmed), developing robust chronologies in the dendro community

9:30 Session I—untitled

12:00 Lunch

13:00 KEYNOTE ADDRESS—Sune Olander Rasmussen (confirmed), developing robust chronologies in the ice core community

14:00 Session II—untitled

17:00 Dinner (off-campus)

18 March 2011

7:30 Breakfast

8:30 KEYNOTE ADDRESS—Dominik Fleitmann (invited, response pending), developing robust chronologies in the speleothem community

9:30 Session III—untitled

12:00 Lunch

13:00 KEYNOTE ADDRESS—speaker to be determined, developing robust chronologies in the coral community

14:00 Poster Session (with oral summaries)

17:00 Dinner (off-campus)

19 March 2011

7:30 Breakfast

8:30 Session IV—untitled

12:00 Lunch

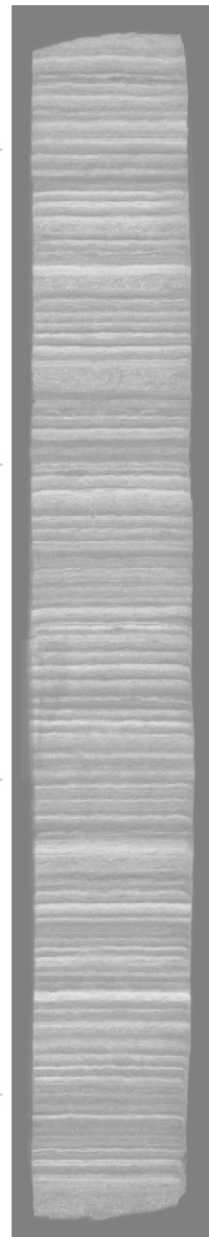
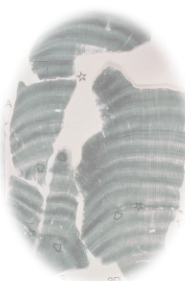
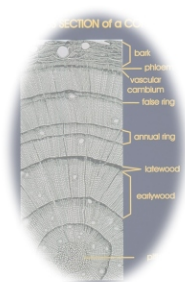
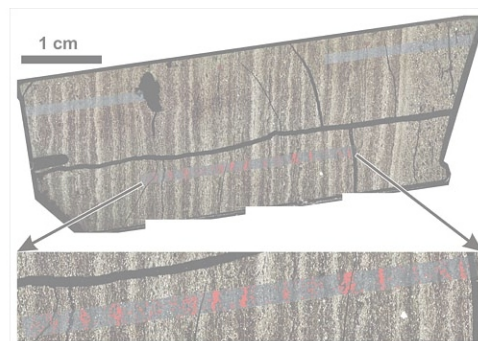
13:00 Final discussion

16:00 End of workshop

### **Details About the Venue and Corpus Christi, TX:**

The workshop will be held in the modern conference facilities housed in the Harte Research Institute for Gulf of Mexico Studies (<http://www.harteresearchinstitute.org/>) on the campus of Texas A&M University—Corpus Christi (<http://www.tamucc.edu/>). The University is committed to providing alternative access standards to accommodate individuals with disabilities, and the campus is completely equipped for such access.

Corpus Christi, a city with a population of almost 300,000 inhabitants, is located on the Gulf of Mexico along the South Texas coast. The city enjoys a stunning, coastal setting, and benefits from a humid subtropical climate. March temperatures range from an average low of 56°F/13°C to an average high of 76°F/24°C. The city is well-communicated, with the airport serviced by American, Continental, and Southwest Airlines.



This workshop is supported by:

